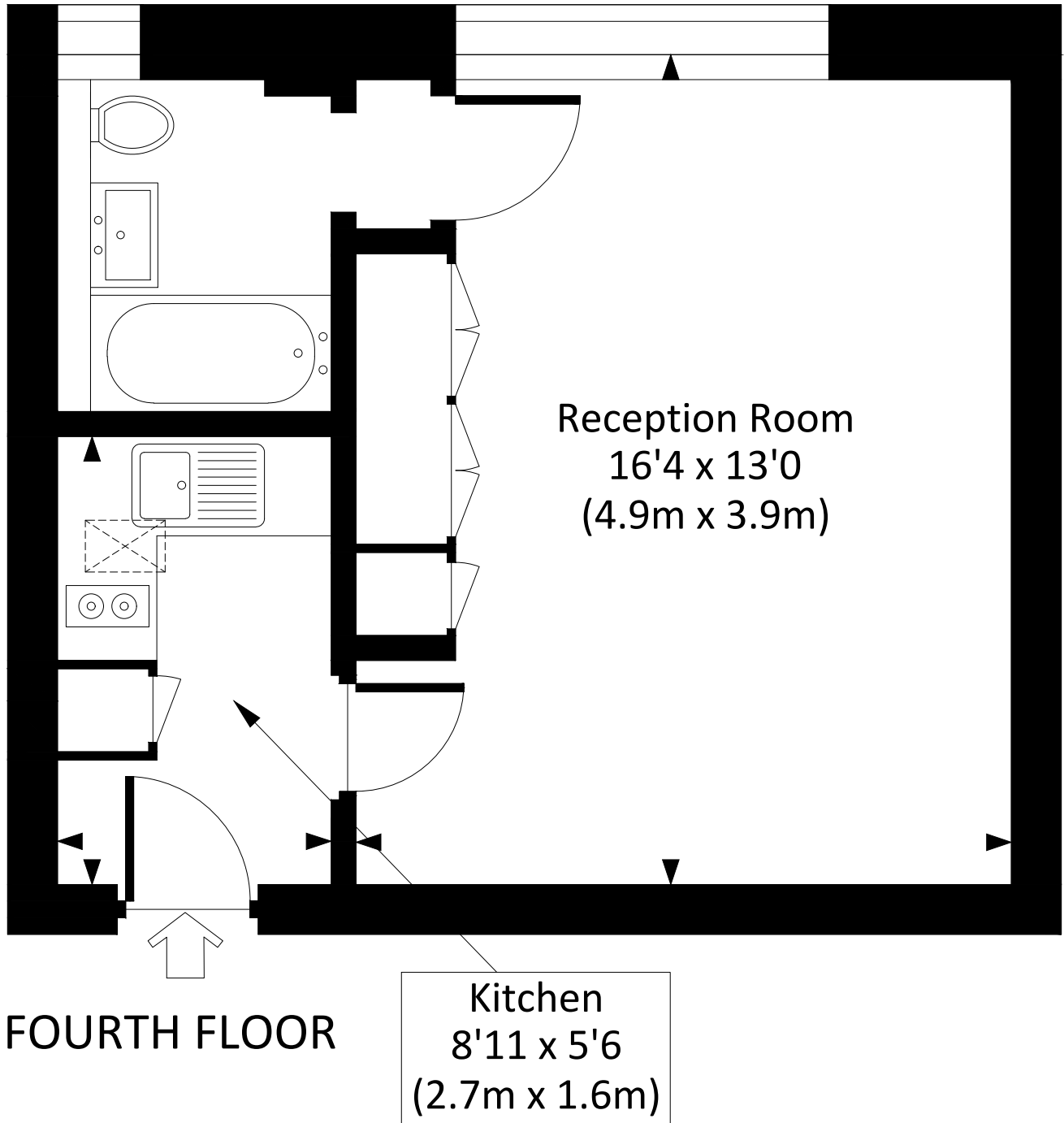


KING'S ROAD, SW3

Approx. gross internal area
305 Sq Ft. / 28.4 Sq M.



All measurements have been made in accordance with RICS code of Measuring Practice which are approximate only and only for illustrative purposes. For the avoidance of doubt, Dowling Jones Design shall not be liable for any reliance on these measurements. © 2020 www.dowlingjones.com 020 7610 9933